



Quality Management

Job No	CS069598		
Title	South Staffordshire, Cannock Chase, Lichfield & Stafford Level 1 SFRA Update Volume 2 - Maps		
Location	South Staffordshire Council		
Document Ref	N/A	Issue / Revision	Final (Version 2)
Date	19 th June 2014		
Prepared by	Jane Tingay	Signature (for file)	
Checked by	Louise Tattersall	Signature (for file)	
Authorised by	Steve Thompsett	Signature (for file)	

Revision Status

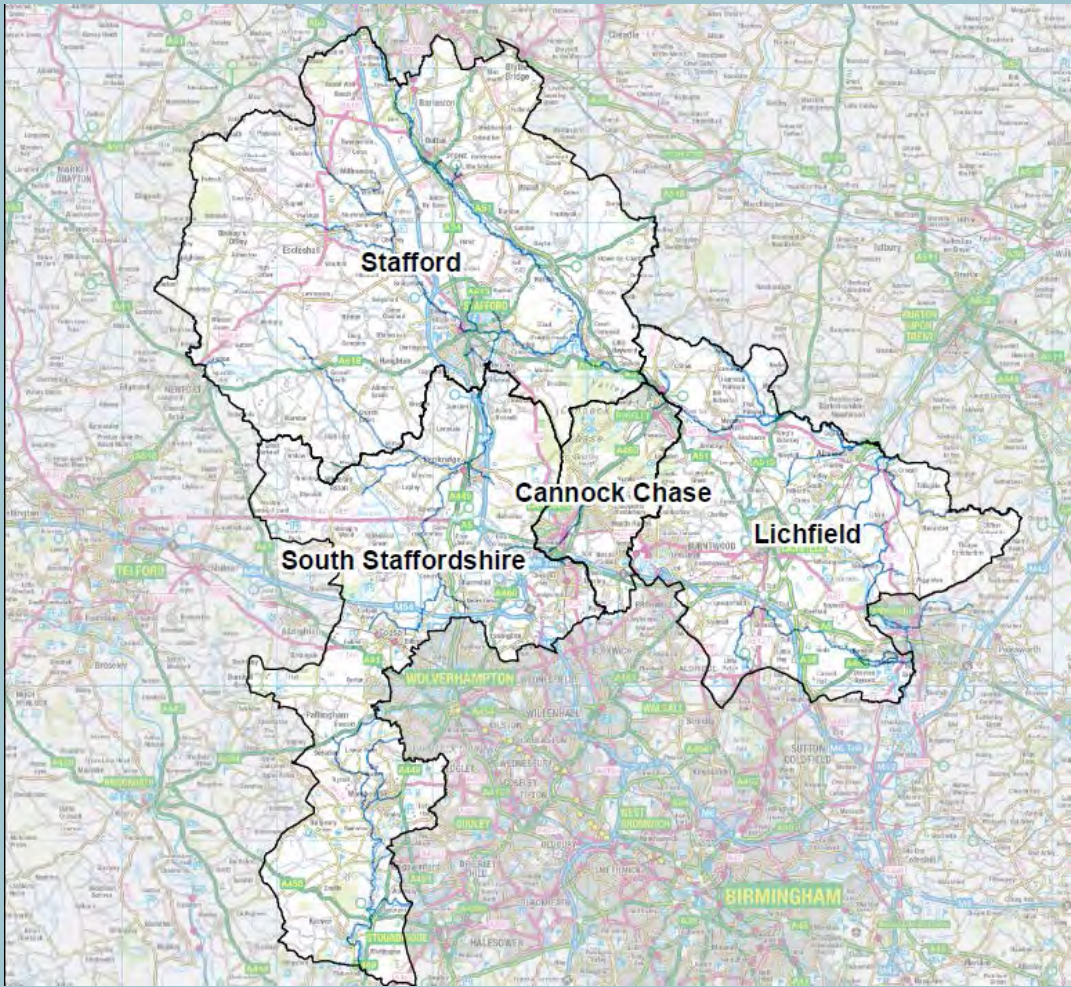
Rev	Date	Issue / Purpose/ Comment	Prepared	Checked	Authorised
Draft	28/02/2014	Issue draft for comment	JT	LT	ST
Final	30/04/2014	Final	JT	LT	ST
Final	19/06/2014	Final (Version 2)	JT	-	ST

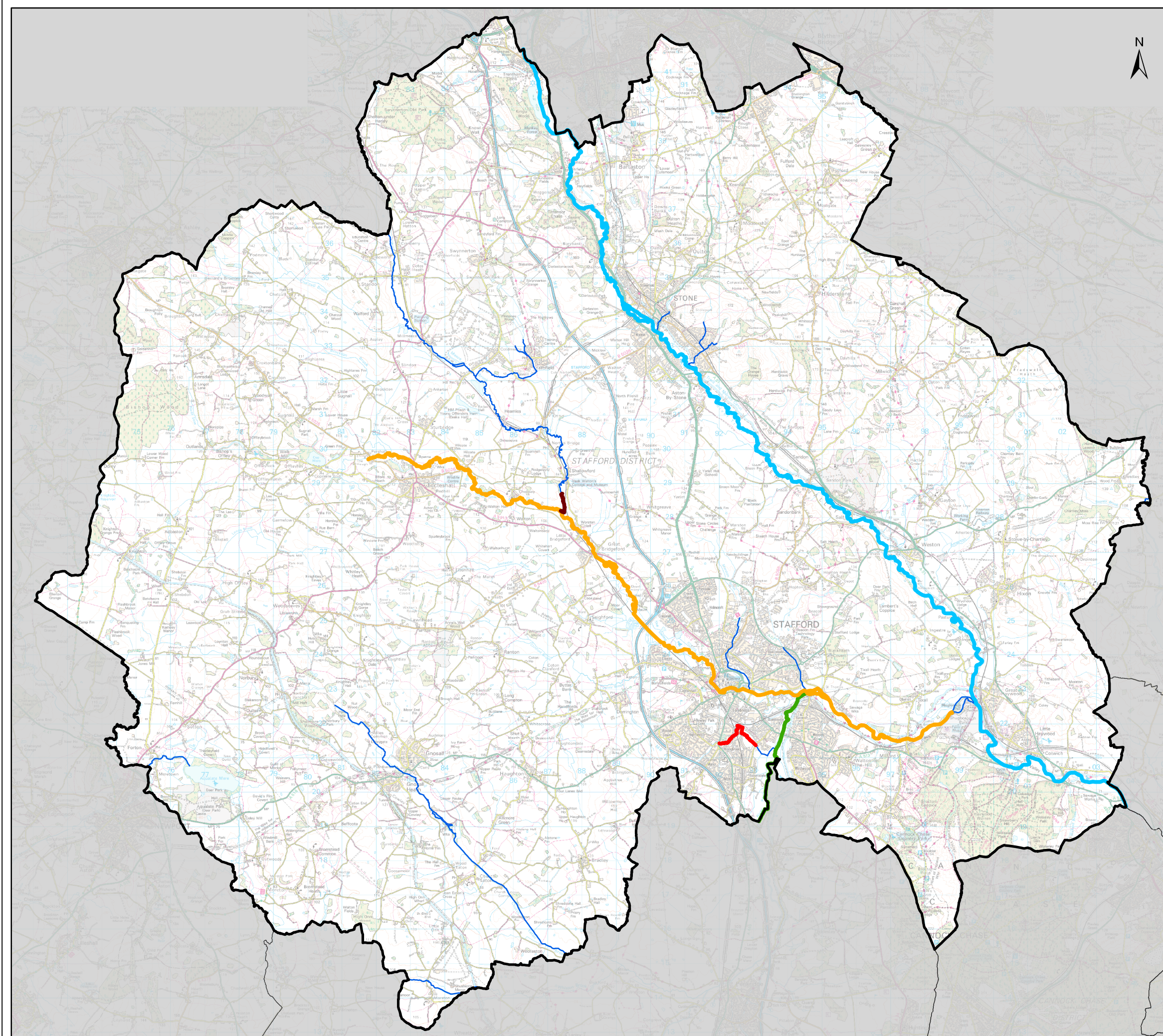
This document and related appendices have been updated on behalf of South Staffordshire, Cannock Chase Council, Lichfield District Council & Stafford Borough Council by:

CAPITA

Quays Office Park, Conference Avenue, Portishead, BS20 7LZ.
Tel 01275 840 840 www.capita.co.uk

South Staffordshire, Cannock Chase,
Lichfield & Stafford
Strategic Flood Risk Assessment
Volume 2 - Maps
June 2014





Legend

— Main Rivers

Model Extents

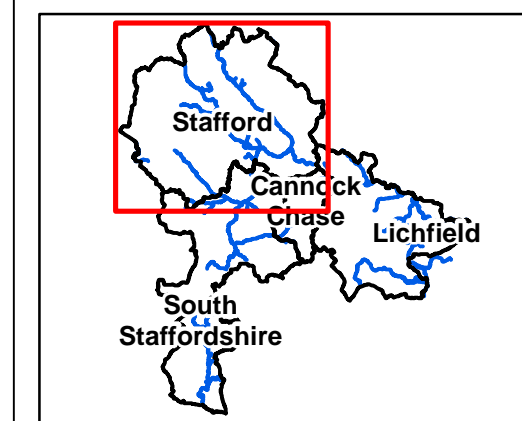
— Meece Brook

— River Penk, River Sow & Penk Model Calibration, 2008

 Rising Brook, Rising Brook Flood Risk Mapping Study, 2006

— River Penk, River Sow & Penk Model Calibration, 2008

— River Trent, River Trent SFRM, 2009



Notes

Contains Ordnance Survey data © Crown copyright and database rights 2014
Ordnance Survey 100018205.
Note the property of this drawing and design is vested in Capita Property and
infrastructure Limited and must not be copied or reproduced in anyway without
their written consent.



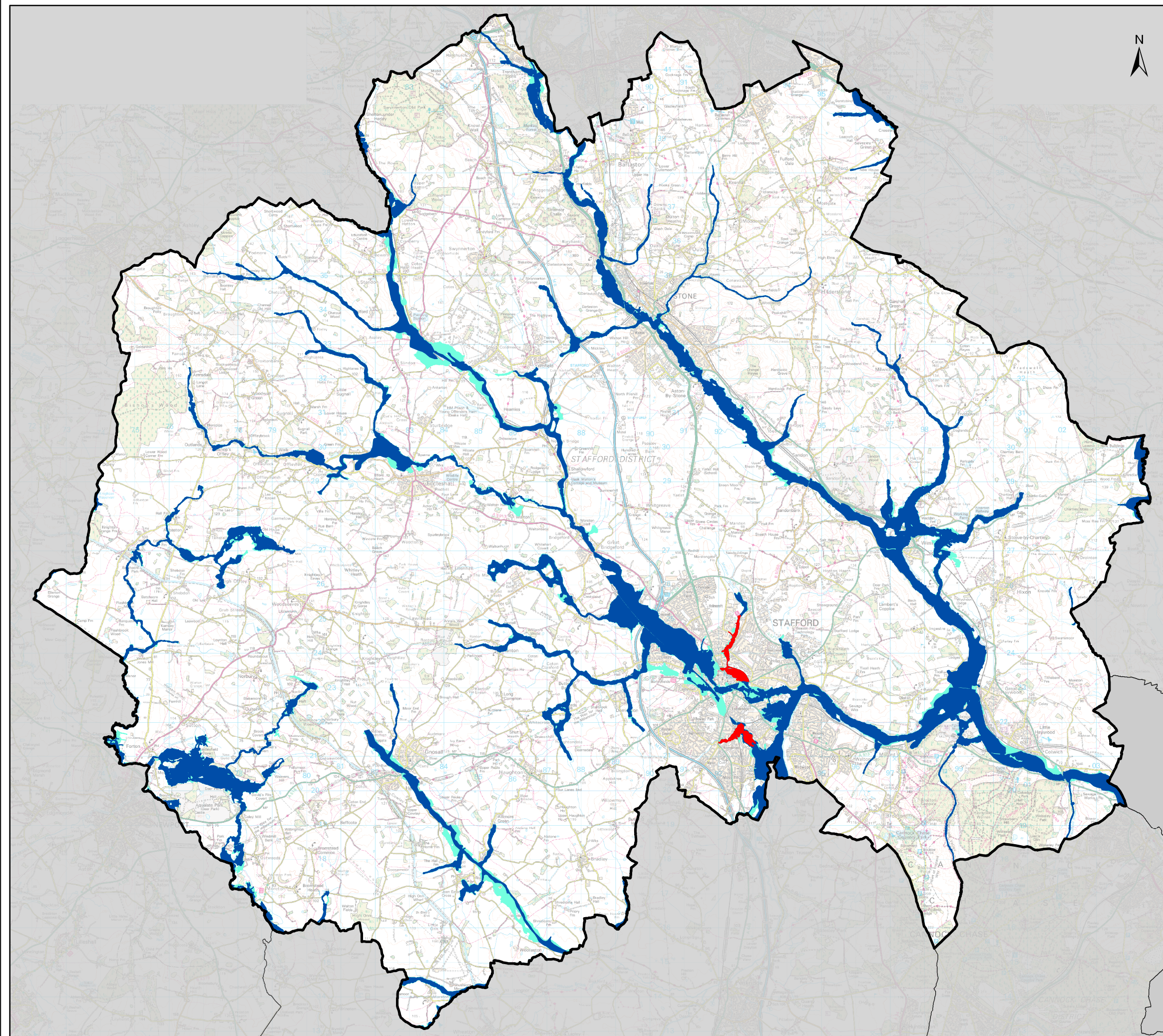
South Staffordshire Strategic Flood Risk Assessment

Figure M-SB
Modelled Watercourses
in Stafford Borough Council

Consultants

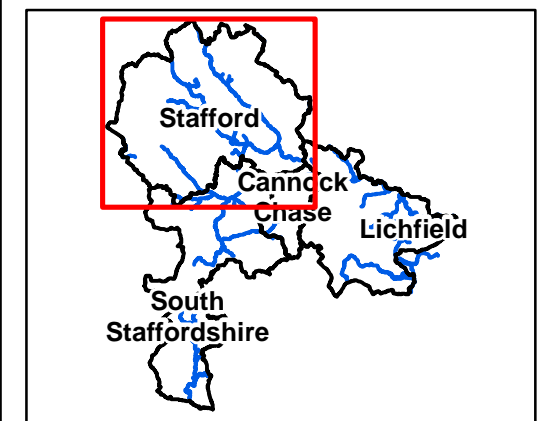
CAPITA

DRAWN BY HT	CHECKED BY JT	PASSED BY JT	DATE 17/04/14	SCALE @ A3 1:110,000
DRAWING NUMBER CS069598_M_004			REV 2	ISSUING OFFICE Bristol



Legend

- EA Flood Zone 3 (High Probability)
- EA Flood Zone 3 + Climate Change
- EA Flood Zone 2 (Med Probability)



Notes

Contains Ordnance Survey data © Crown copyright and database rights 2014
Ordnance Survey 100018205.
Note the property of this drawing and design is vested in Capita Property and
Infrastructure Limited and must not be copied or reproduced in anyway without
their written consent.



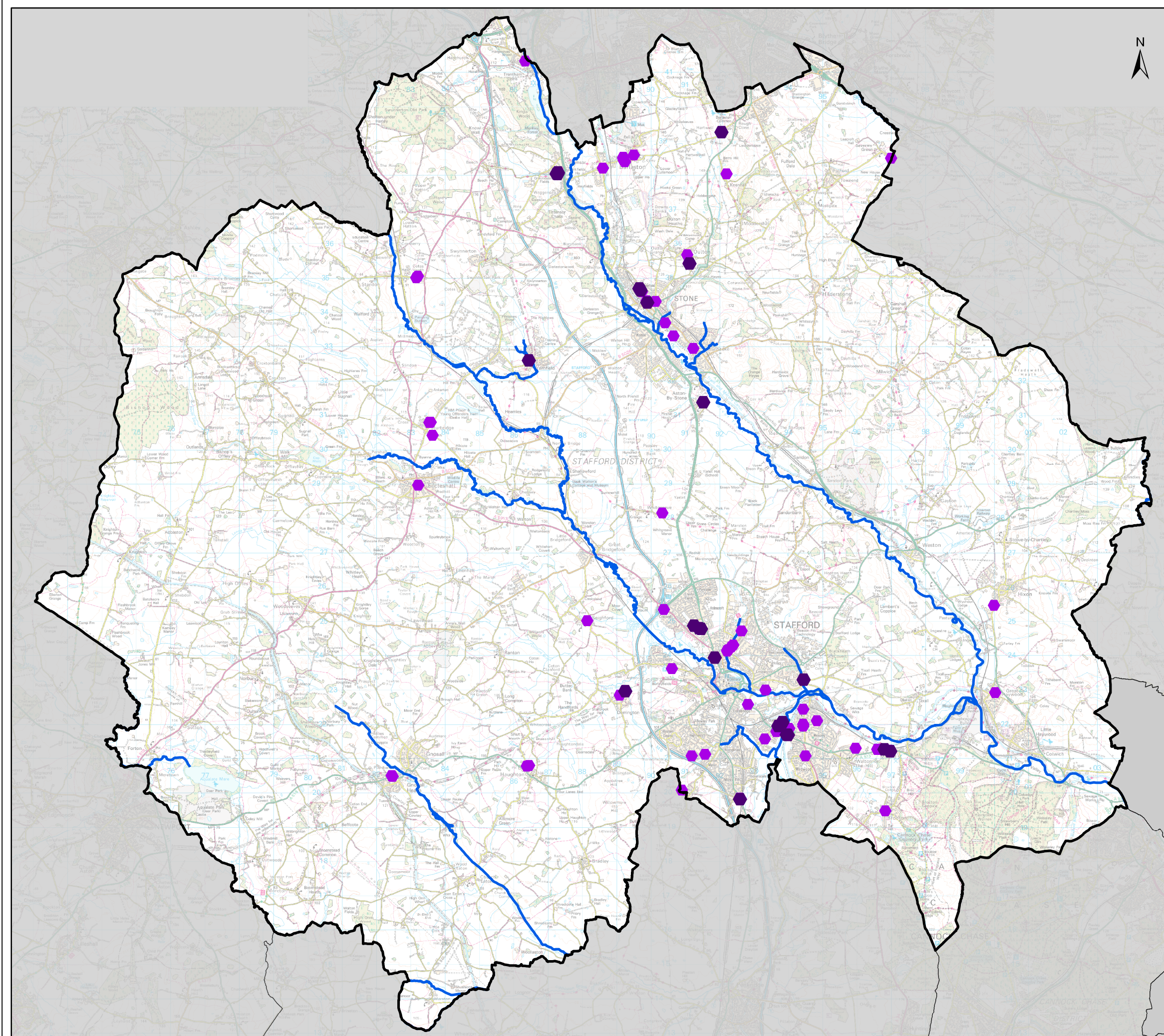
South Staffordshire Strategic Flood Risk Assessment

Figure FZ-SB
Environment Agency Flood Zones
in Stafford Borough Council

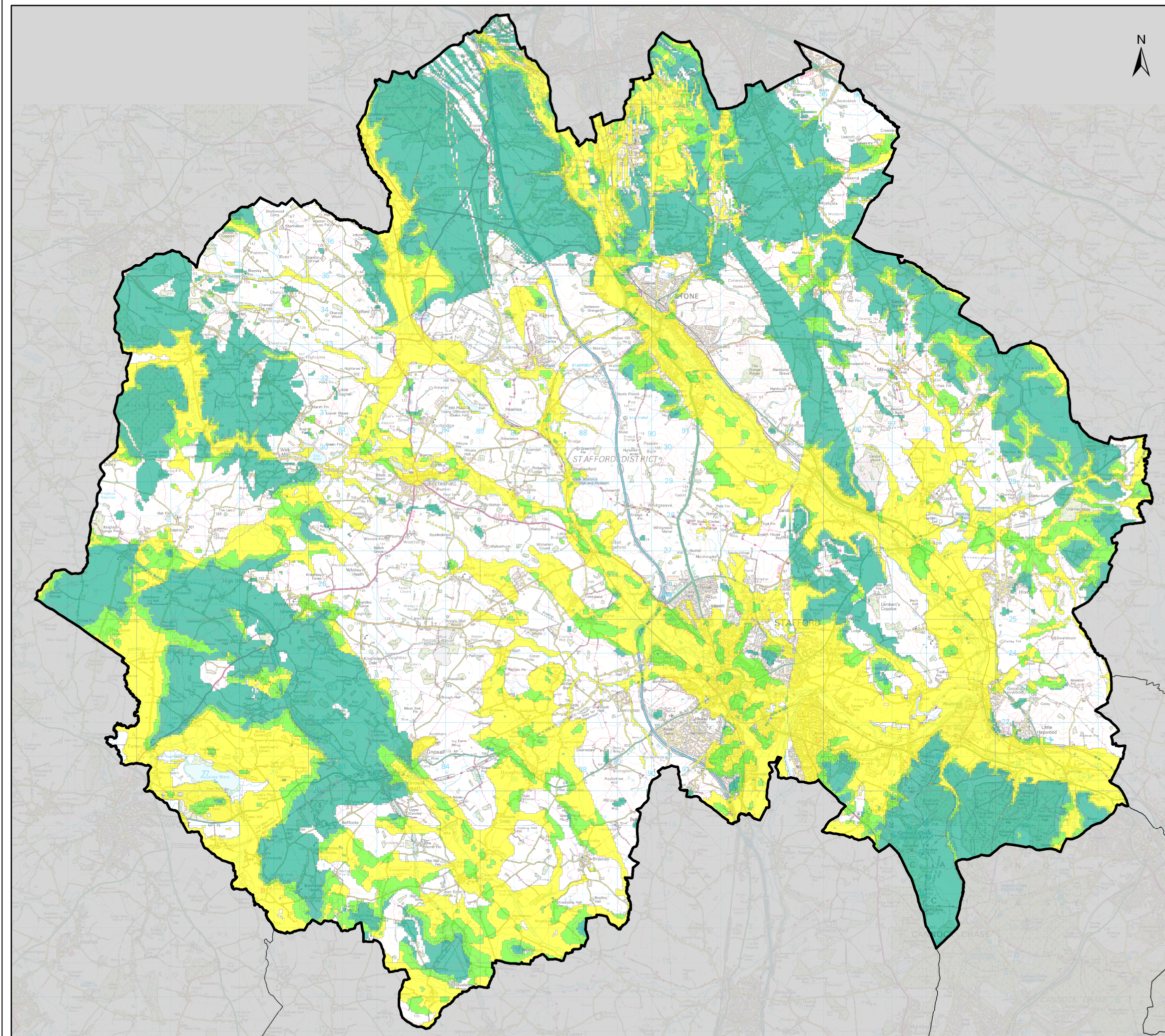
Consultants

CAPITA

DRAWN BY HT	CHECKED BY JT	PASSED BY JT	DATE 17/04/14	SCALE @ A3 1:110,000
DRAWING NUMBER CS069598_FZ_004			REV 2	ISSUING OFFICE Bristol



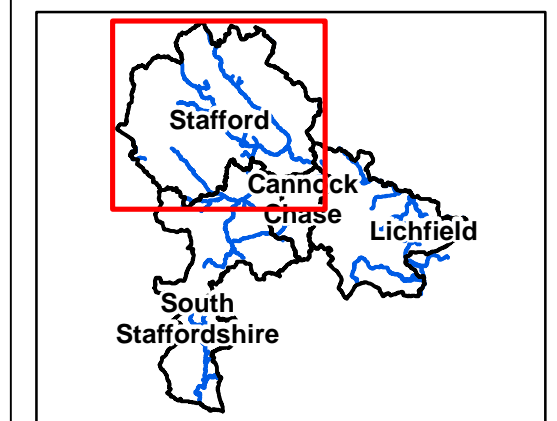
DRAWN BY HT	CHECKED BY JT	PASSED BY JT	DATE 17/04/14	SCALE @ A3 1:110,000
DRAWING NUMBER CS069598_SF_004			REV 2	ISSUING OFFICE Bristol



Legend

Groundwater Flood Susceptibility

- A
- B
- C



Notes

Contains Ordnance Survey data © Crown copyright and database rights 2014
Ordnance Survey 100018205.
Note the property of this drawing and design is vested in Capita Property and
Infrastructure Limited and must not be copied or reproduced in anyway without
their written consent.



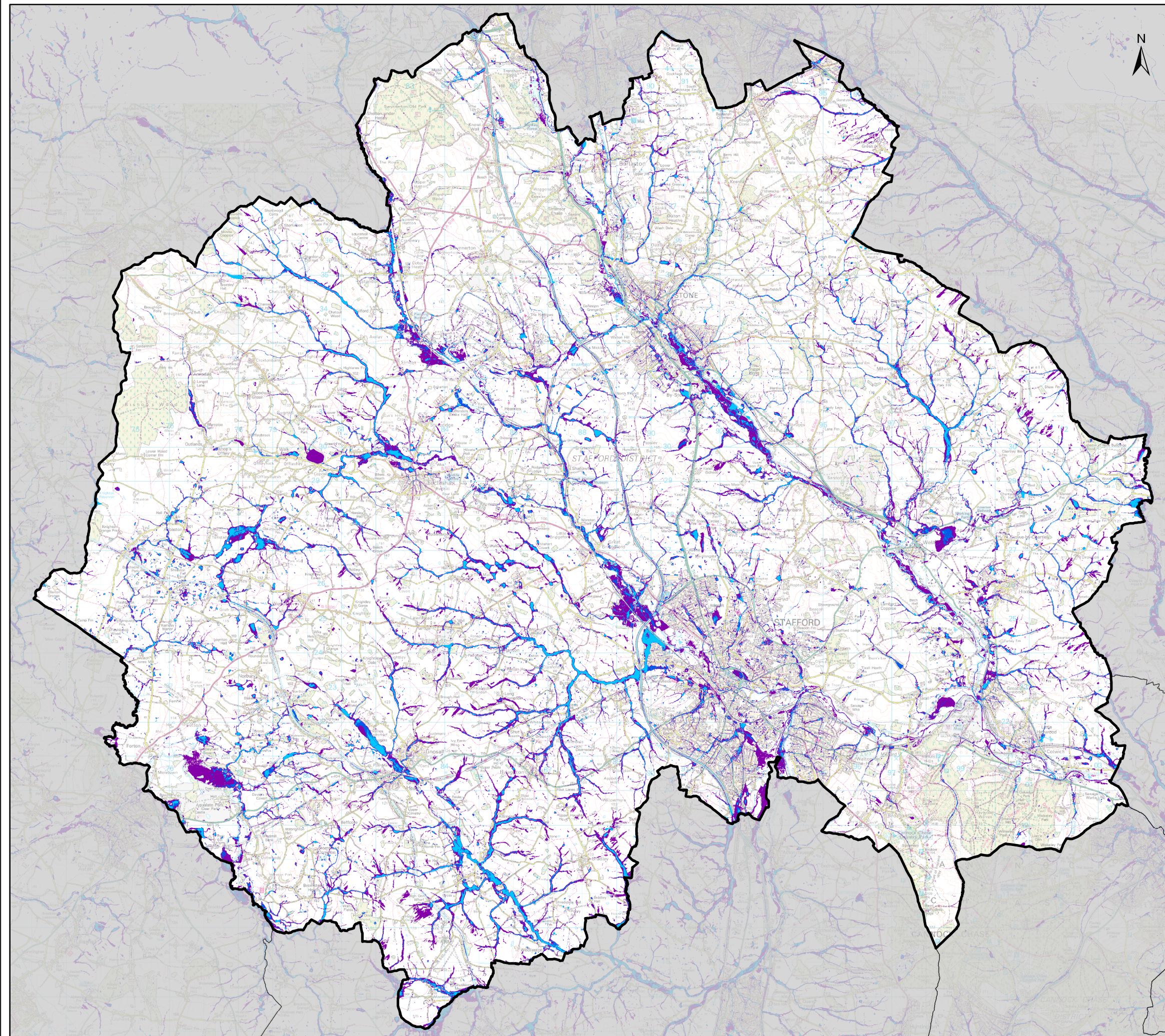
South Staffordshire Strategic Flood Risk Assessment

Figure GW-SB Groundwater Flood Susceptibility in Stafford Borough Council

Consultants

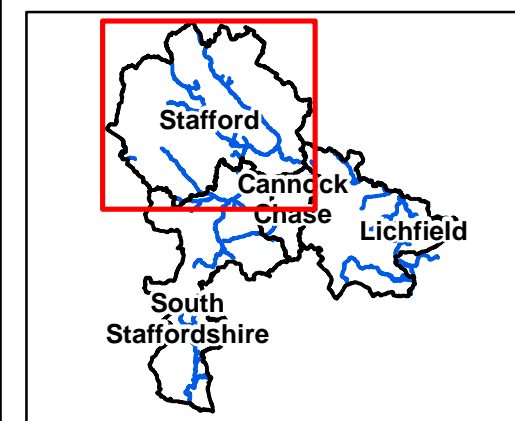
CAPITA

DRAWN BY HT	CHECKED BY JT	PASSED BY JT	DATE 17/04/14	SCALE @ A3 1:110,000
DRAWING NUMBER CS069598_BGS_GW_004			REV 2	ISSUING OFFICE Bristol



Legend

- uFMfSW 30 year
- uFMfSW 100 year
- uFMfSW 1000 year



Notes

Contains Ordnance Survey data © Crown copyright and database rights 2014
Ordnance Survey 100018205.
Note the property of this drawing and design is vested in Capita Property and
Infrastructure Limited and must not be copied or reproduced in anyway without
their written consent.

South Staffordshire Strategic Flood Risk Assessment

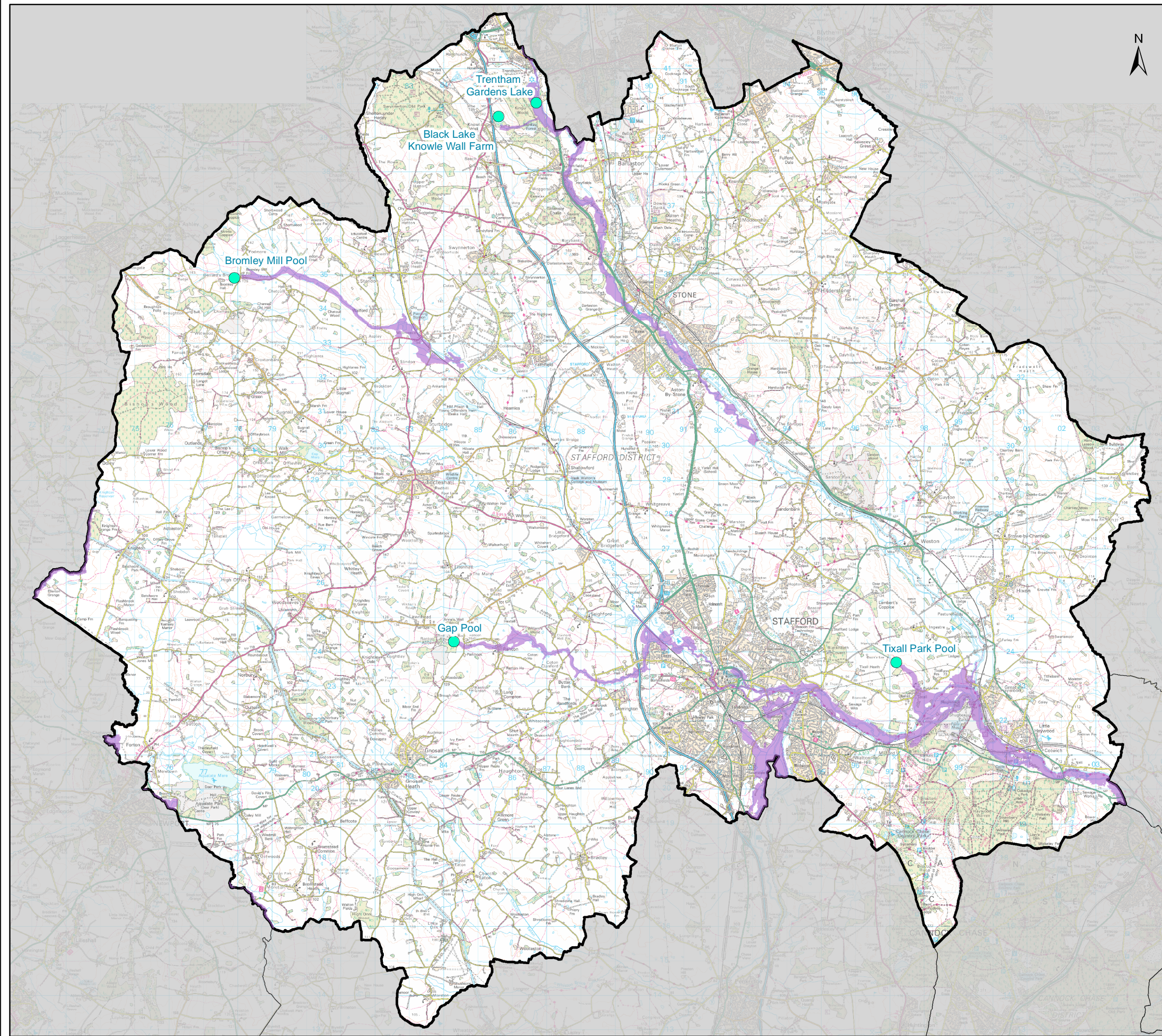
Figure SW-SB
Updated Flood Map for Surface Water
(uFMfSW) for Stafford Borough Council



Consultants

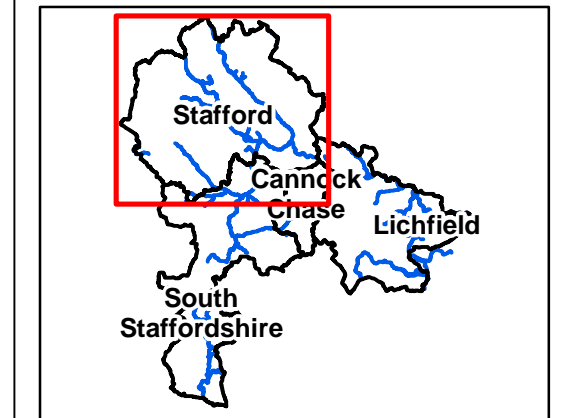
CAPITA

DRAWN BY HT	CHECKED BY JT	PASSED BY JT	DATE 22/04/2014	SCALE @ A3 1:110,000
DRAWING NUMBER CS069598_uFMfSW_004			REV 2	ISSUING OFFICE Bristol



Legend

- Reservoirs
- Reservoir Inundation



Notes

Contains Ordnance Survey data © Crown copyright and database rights 2014
Ordnance Survey 100018205.
Note the property of this drawing and design is vested in Capita Property and
infrastructure Limited and must not be copied or reproduced in anyway without
their written consent.

South Staffordshire Strategic Flood Risk Assessment

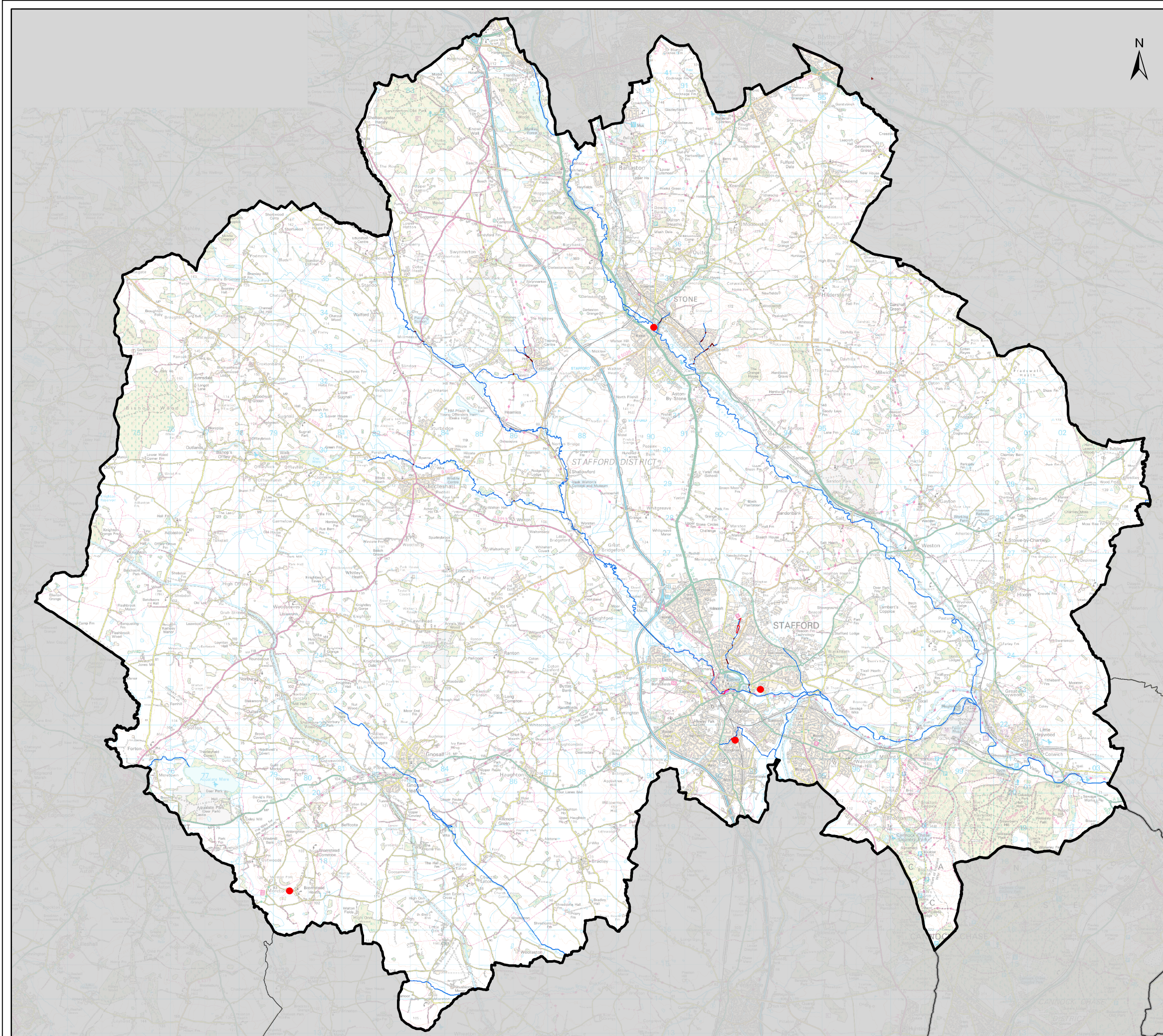
Figure RIM-SB
Reservoir Inundation Flood Map
for Stafford Borough Council



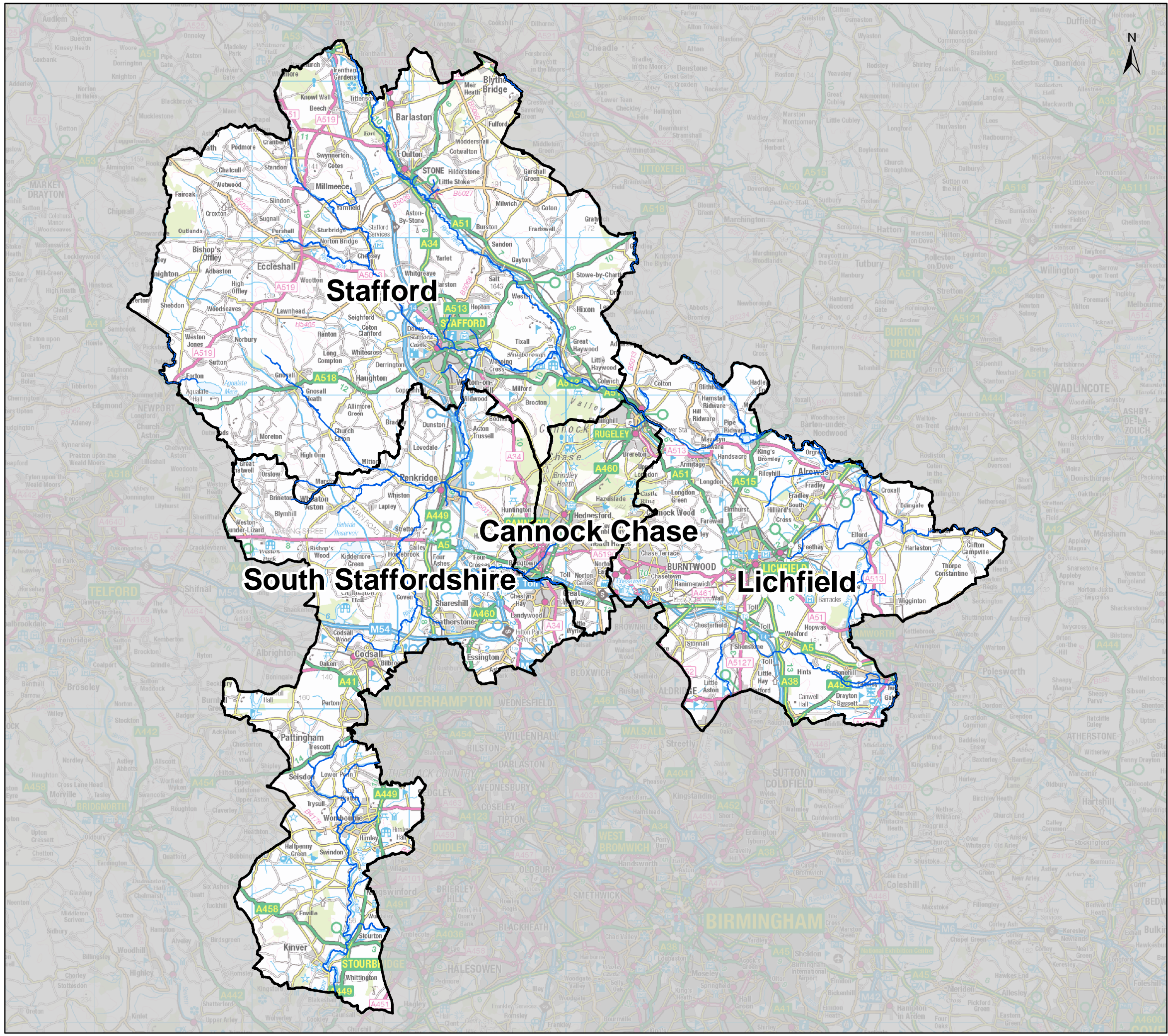
Consultants

CAPITA

DRAWN BY HT	CHECKED BY JT	PASSED BY JT	DATE 17/04/14	SCALE @ A3 1:110,000
DRAWING NUMBER CS069598_RIM_004			REV -	ISSUING OFFICE Bristol



DRAWN BY HT	CHECKED BY JT	PASSED BY JT	DATE 22/04/2014	SCALE @ A3 1:110,000
DRAWING NUMBER CS069598_FD_004			REV 2	ISSUING OFFICE Bristol



Legend

- Main Rivers
- Study Areas

Notes

Contains Ordnance Survey data © Crown copyright and database rights 2014
Ordnance Survey 100019681.
Note the property of this drawing and design is vested in Capita Property and
Infrastructure Limited and must not be copied or reproduced in anyway without
their written consent.

**South Staffordshire
Strategic Flood Risk Assessment**

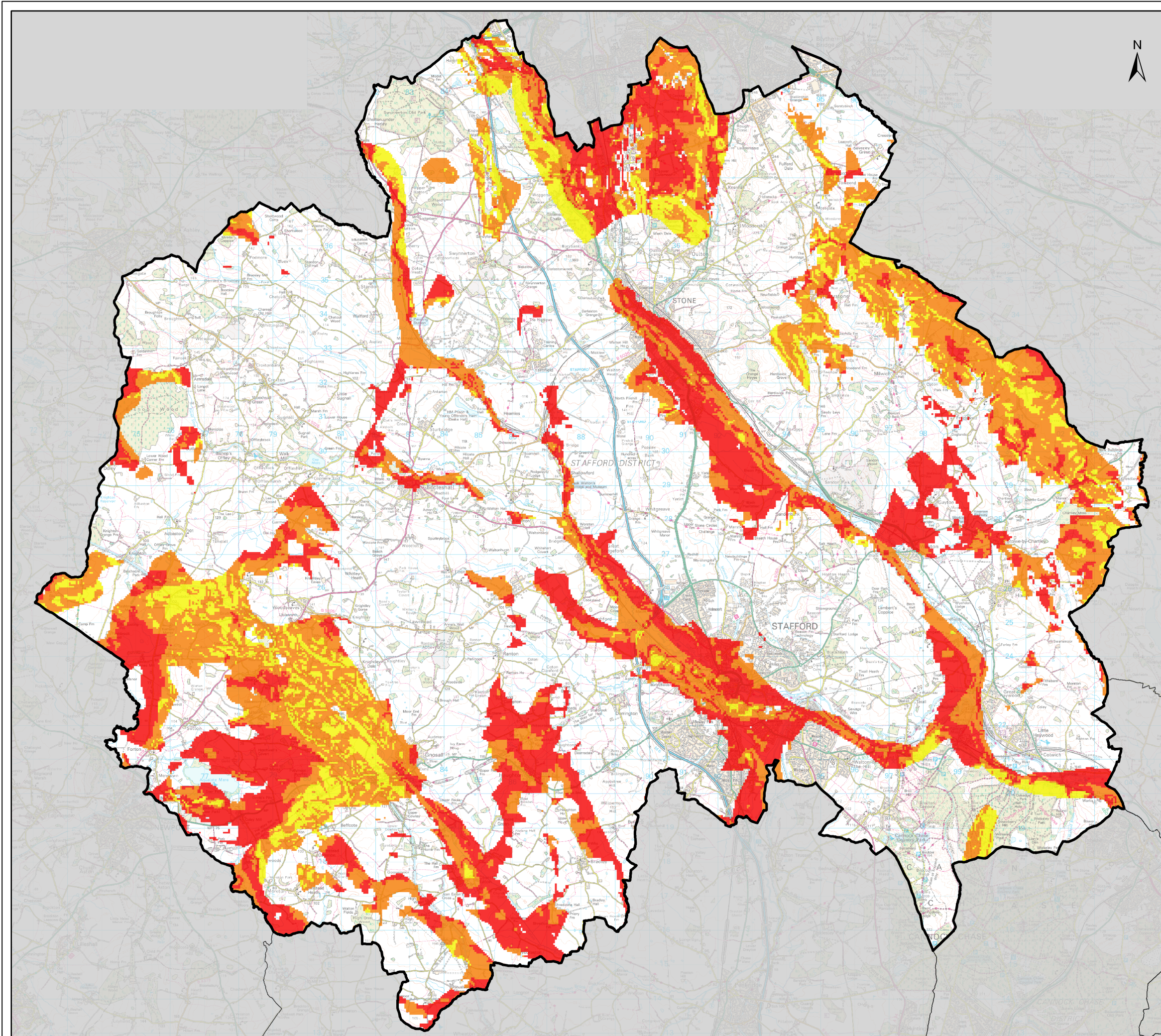
Figure A
Study Area



Consultants

CAPITA

DRAWN BY HT	CHECKED BY -	PASSED BY -	DATE 25/02/14	SCALE @ A3 1:240,000
DRAWING NUMBER CS069598_A_All			REV -	ISSUING OFFICE Bristol



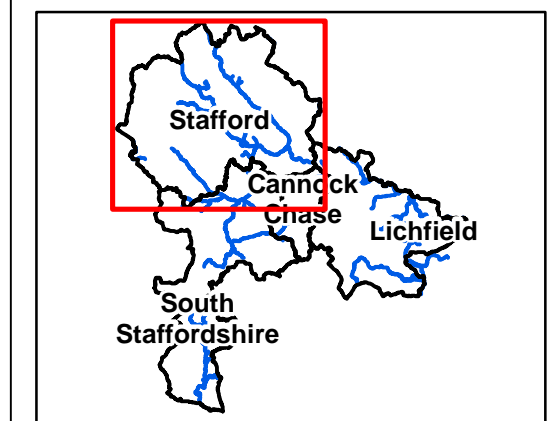
Legend

Suitability of Infiltration SuDS Techniques

Low

Medium

High



Notes

Contains Ordnance Survey data © Crown copyright and database rights 2014
Ordnance Survey 100019681.
Note the property of this drawing and design is vested in Capita Property and
infrastructure Limited and must not be copied or reproduced in anyway without
their written consent.



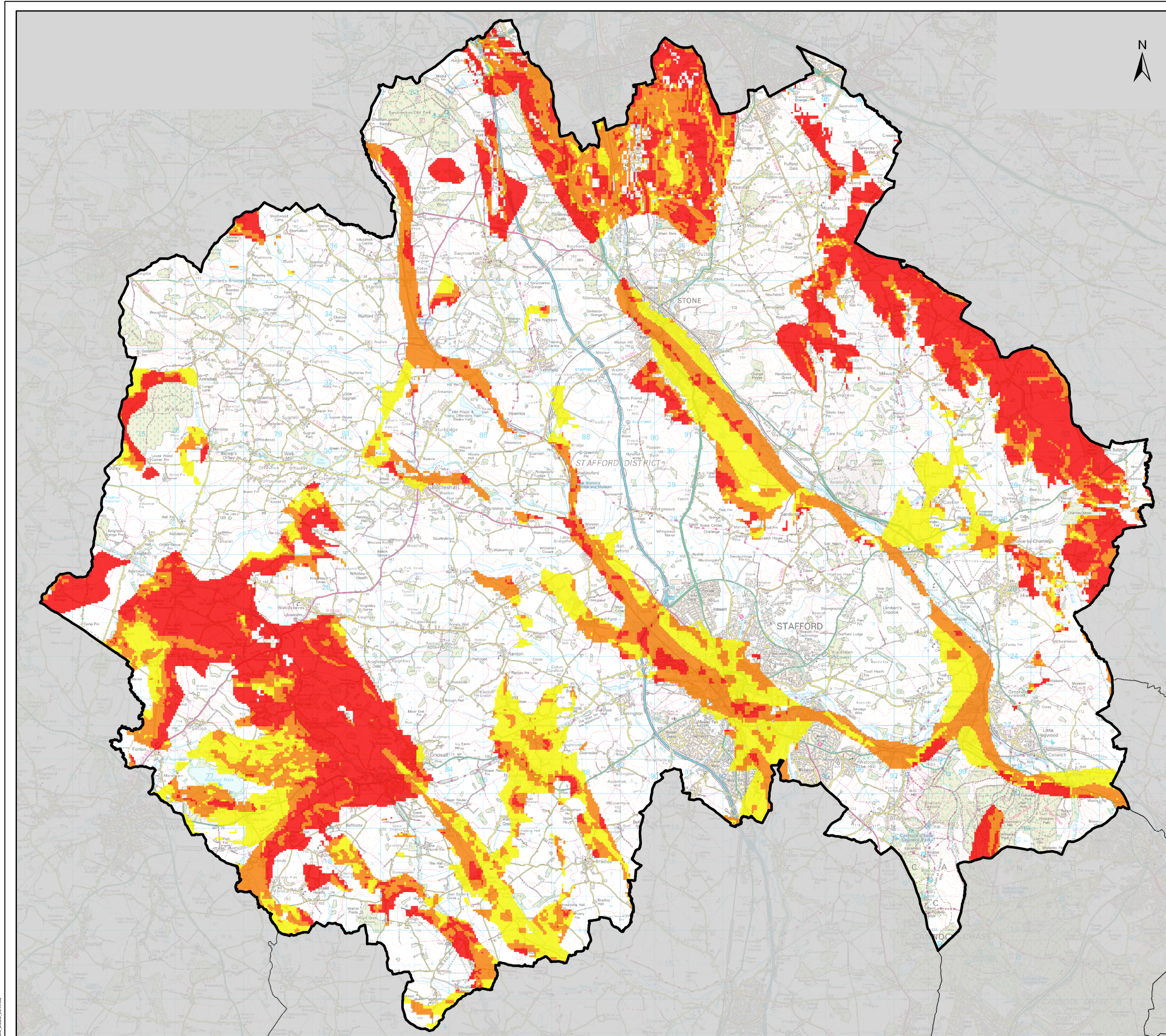
South Staffordshire Strategic Flood Risk Assessment

Figure SS1-SB
Suitability of Infiltration SUDS
techniques in Stafford Borough Council

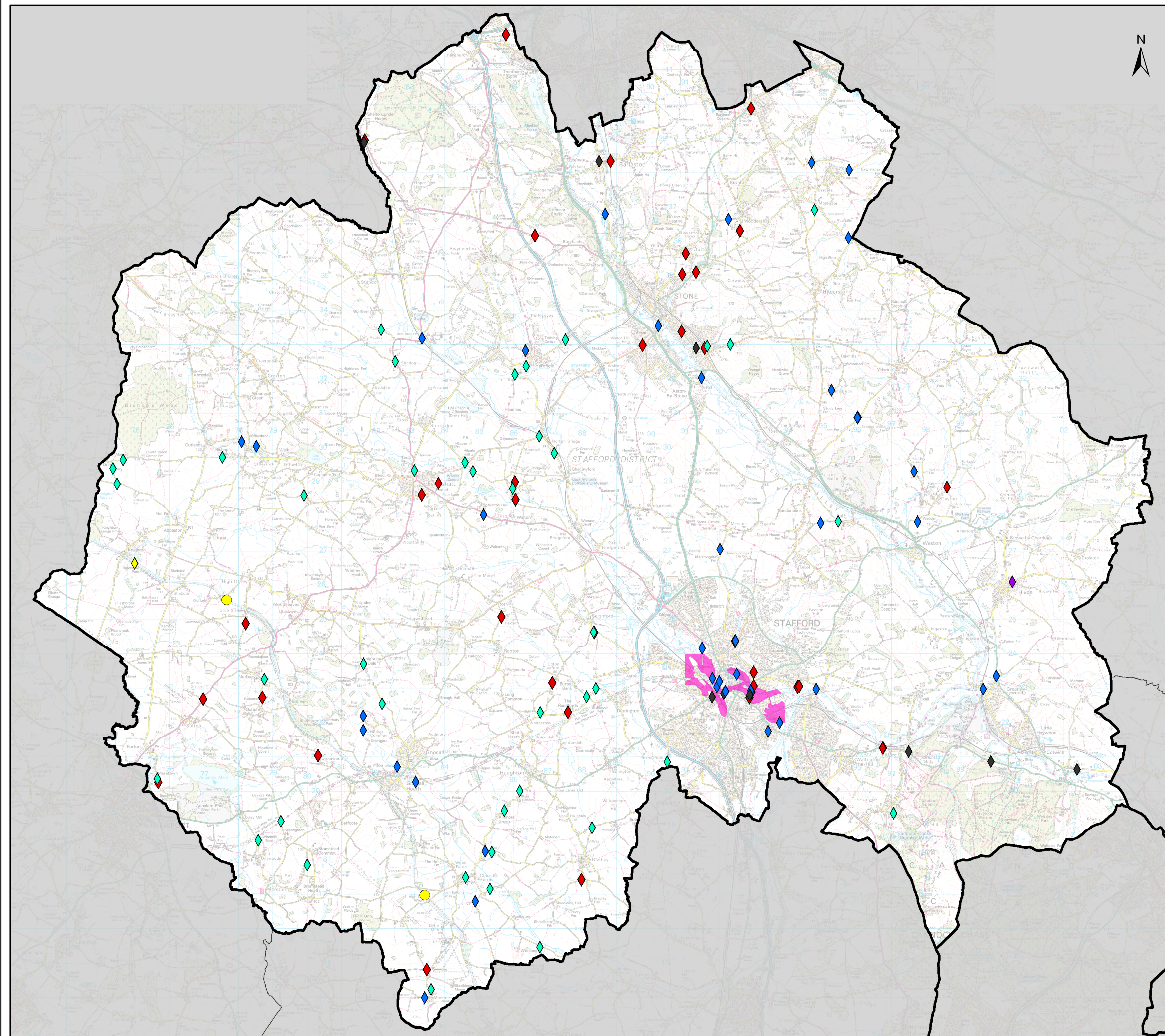
Consultants

CAPITA

DRAWN BY HT	CHECKED BY JT	PASSED BY JT	DATE 29/04/14	SCALE @ A3 1:110,000
DRAWING NUMBER CS069598_SUDS_004_infiltration_v2			REV 2	ISSUING OFFICE Bristol



DRAWN BY HT	CHECKED BY JT	PASSED BY JT	DATE 29/04/14	SCALE @ A3 1:110,000
DRAWING NUMBER CS069598_SUDS_004_storage_v2			REV 2	ISSUING OFFICE Bristol







Legend

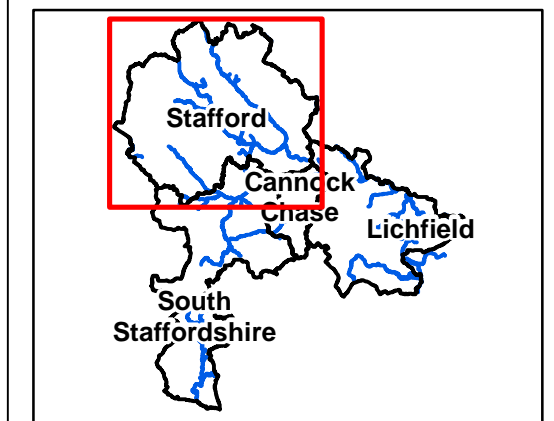
 EA Historic Flood Map

Post 2008 Historic Flood Points

- | | |
|--|---|
|  Canal |  Sewer |
|  Fluvial |  Surface Water |
|  Highways |  Unknown |

2008 SFRA Historic Flood Points

-  Artificial Drainage
-  Canal Breach
-  Fluvial
-  Groundwater
-  Surface Water
-  Unknown



Notes

Contains Ordnance Survey data © Crown copyright and database rights 2014
Ordnance Survey 100018205.
Note the property of this drawing and design is vested in Capita Property and
Infrastructure Limited and must not be copied or reproduced in anyway without
their written consent.



South Staffordshire Strategic Flood Risk Assessment

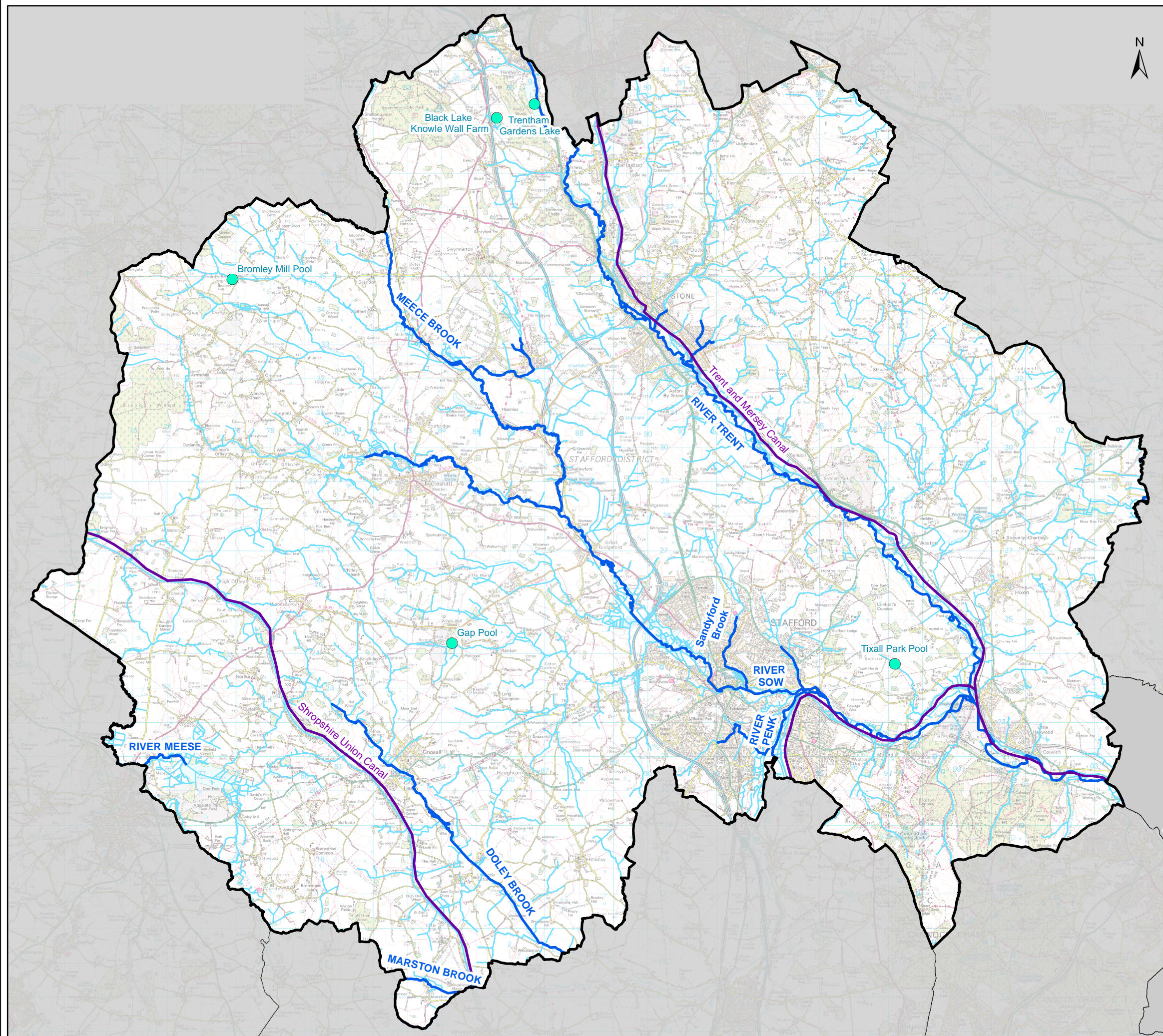
Figure HF-SB
Historic Flooding Incidents
in Stafford Borough Council

Consultants

CAPITA

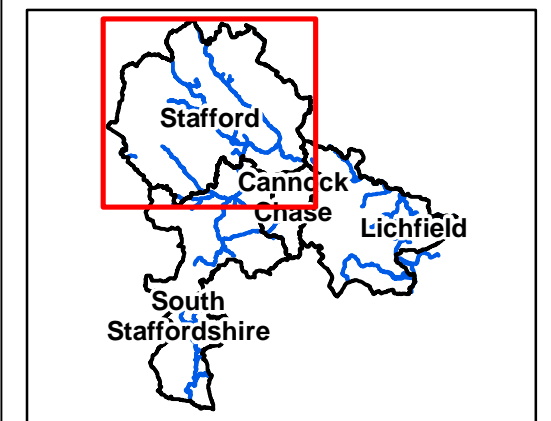
DRAWN BY HT	CHECKED BY JT	PASSED BY JT	DATE 22/04/14	SCALE @ A3 1:110,000
DRAWING NUMBER CS0605959_HF_004			REV 2	ISSUING OFFICE Bristol

L:\0007\PROJECTS\CS069598\1_104.pdf
CS069598_1_104_02.mxd



Legend

- Reservoirs
- Main Rivers
- Detailed River Network
- Canals



Notes

Contains Ordnance Survey data © Crown copyright and database rights 2014
Ordnance Survey 100018205.
Note the property of this drawing and design is vested in Capita Property and
infrastructure Limited and must not be copied or reproduced in anyway without
their written consent.



South Staffordshire Strategic Flood Risk Assessment

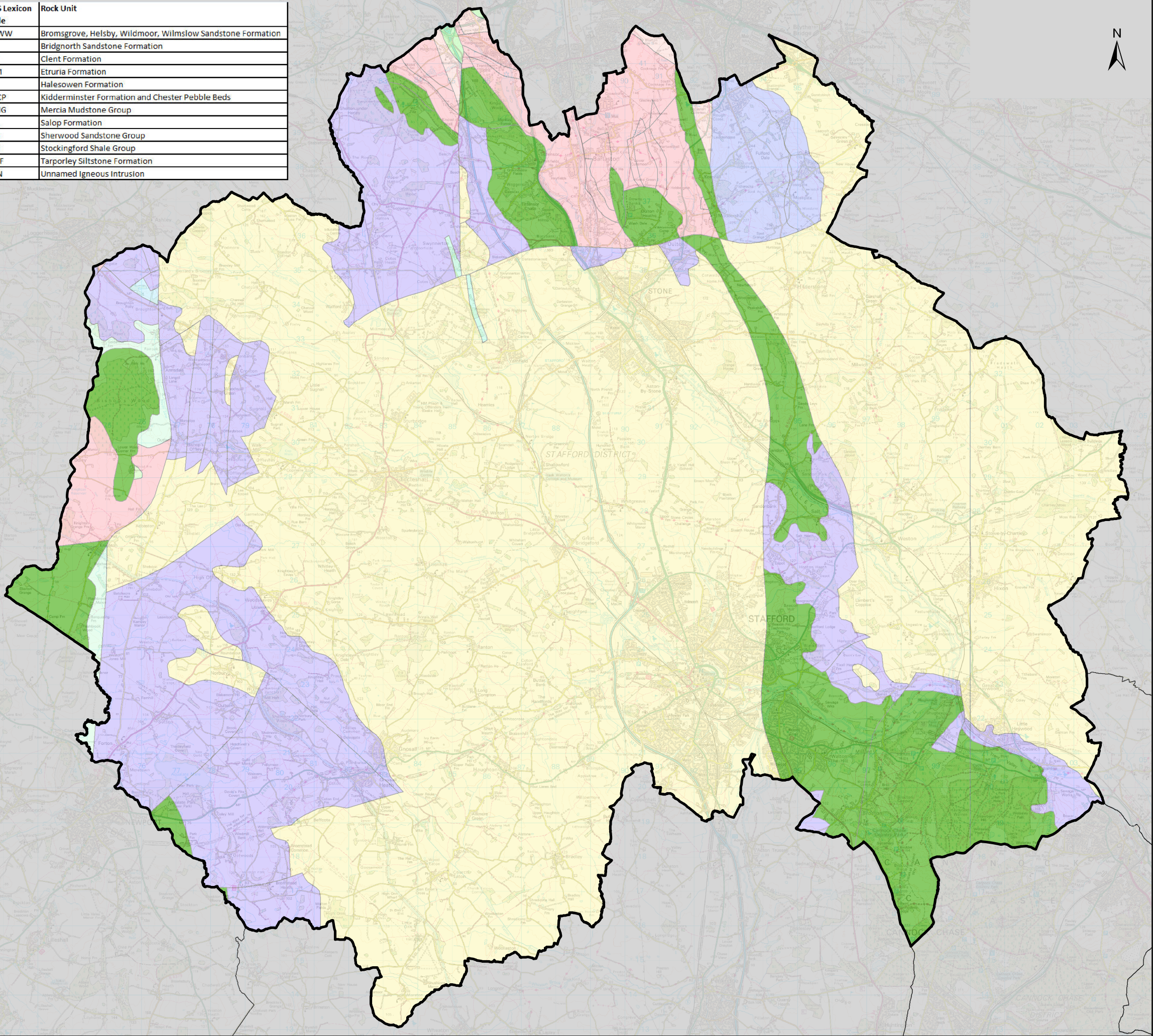
Figure H-SB
Hydrology of
Stafford Borough Council

Consultants

CAPITA

DRAWN BY HT	CHECKED BY JT	PASSED BY JT	DATE 17/04/14	SCALE @ A3 1:110,000
DRAWING NUMBER CS069598_H_004			REV 2	ISSUING OFFICE Bristol

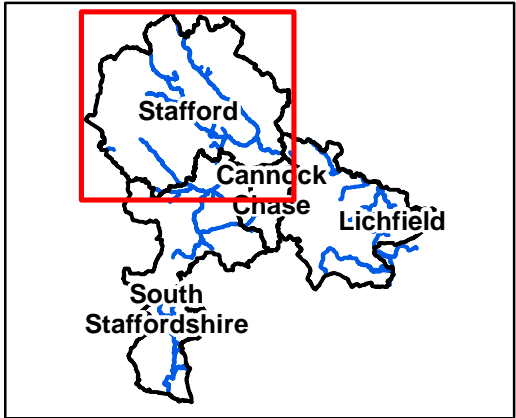
BGS Lexicon Code	Rock Unit
BHWW	Bromsgrove, Helsby, Wildmoor, Wilmslow Sandstone Formation
BRI	Bridgnorth Sandstone Formation
CLT	Clent Formation
ETM	Etruria Formation
HA	Halesowen Formation
KDCP	Kidderminster Formation and Chester Pebble Beds
MMG	Mercia Mudstone Group
SAL	Salop Formation
SSG	Sherwood Sandstone Group
SSH	Stockingford Shale Group
TPSF	Tarporley Siltstone Formation
UIIN	Unnamed Igneous Intrusion



Legend

Solid Geology:

- | | |
|------|------|
| BHWW | MMG |
| BRI | SAL |
| CLT | SSG |
| ETM | SSH |
| HA | TPSF |
| KDCP | UIIN |



Notes

Contains Ordnance Survey data © Crown copyright and database rights 2014
Ordnance Survey 100018205.
Note the property of this drawing and design is vested in Capita Property and infrastructure Limited and must not be copied or reproduced in anyway without their written consent.



Lichfield
district Council
www.lichfielddc.gov.uk

South
Staffordshire
Council



South Staffordshire
Strategic Flood Risk Assessment

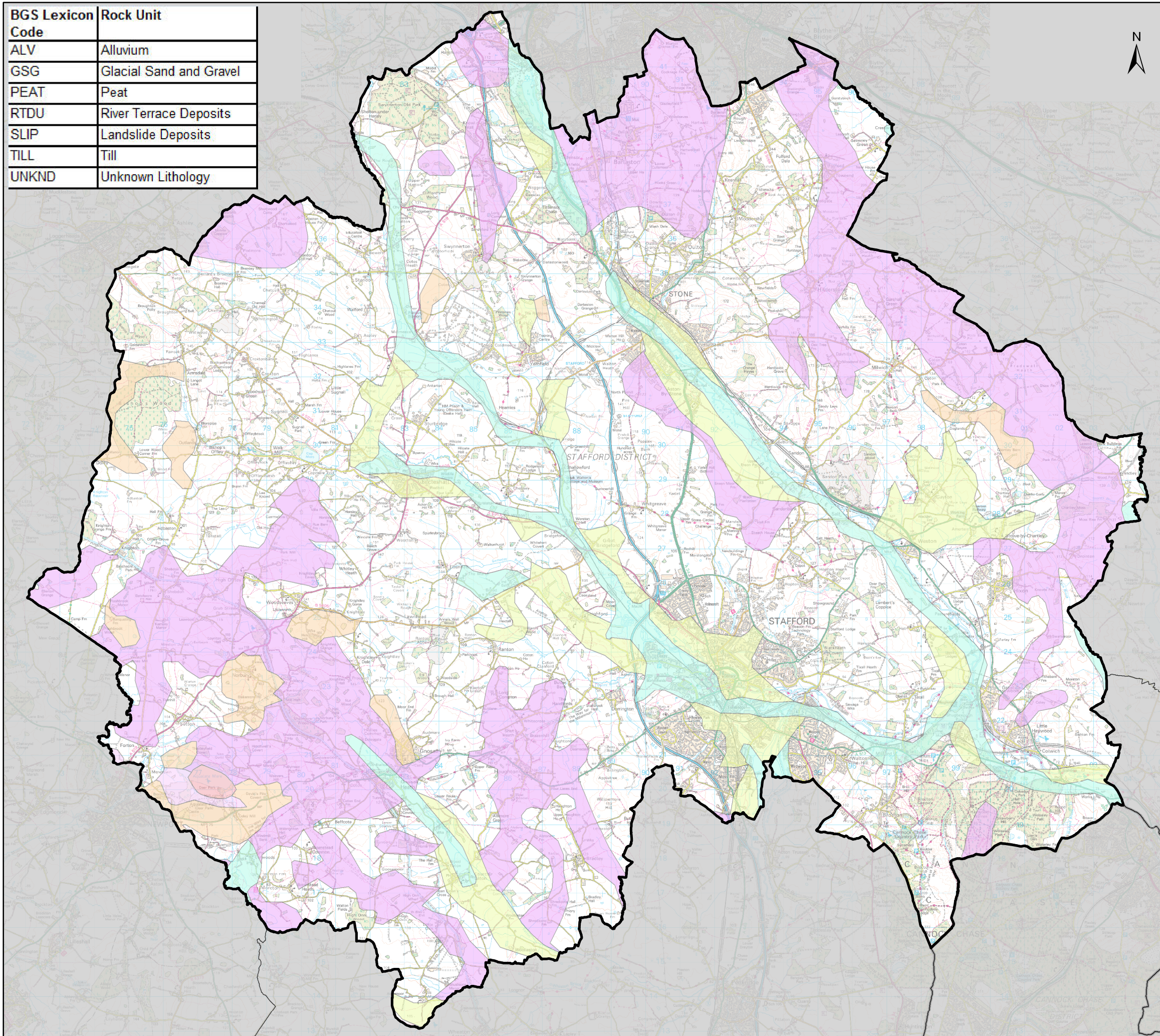
Figure SG-SB
Solid Geology of
Stafford Borough Council

Consultants

CAPITA








DRAWN BY HT	CHECKED BY JT	PASSED BY JT	DATE 17/04/14	SCALE @ A3 1:110,000
DRAWING NUMBER CS069598_SG_004			REV 2	ISSUING OFFICE Bristol

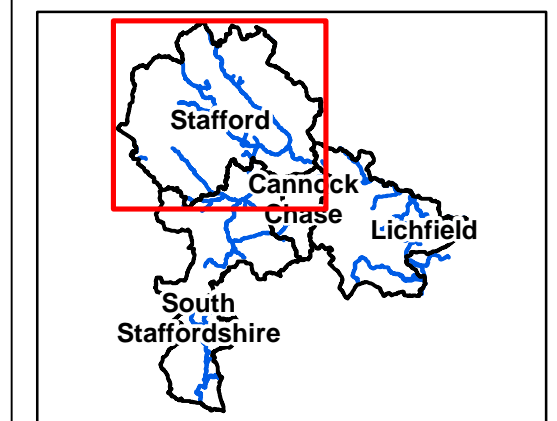
BGS Lexicon Code	Rock Unit
ALV	Alluvium
GSG	Glacial Sand and Gravel
PEAT	Peat
RTDU	River Terrace Deposits
SLIP	Landslide Deposits
TILL	Till
UNKND	Unknown Lithology



Legend

Drift Geology:

- | | |
|---|-------|
|  | ALV |
|  | GSG |
|  | PEAT |
|  | RTDU |
|  | SLIP |
|  | TILL |
|  | UNKND |



Notes

Contains Ordnance Survey data © Crown copyright and database rights 2014
Ordnance Survey 100018205.
Note the property of this drawing and design is vested in Capita Property and
infrastructure Limited and must not be copied or reproduced in anyway without
their written consent.



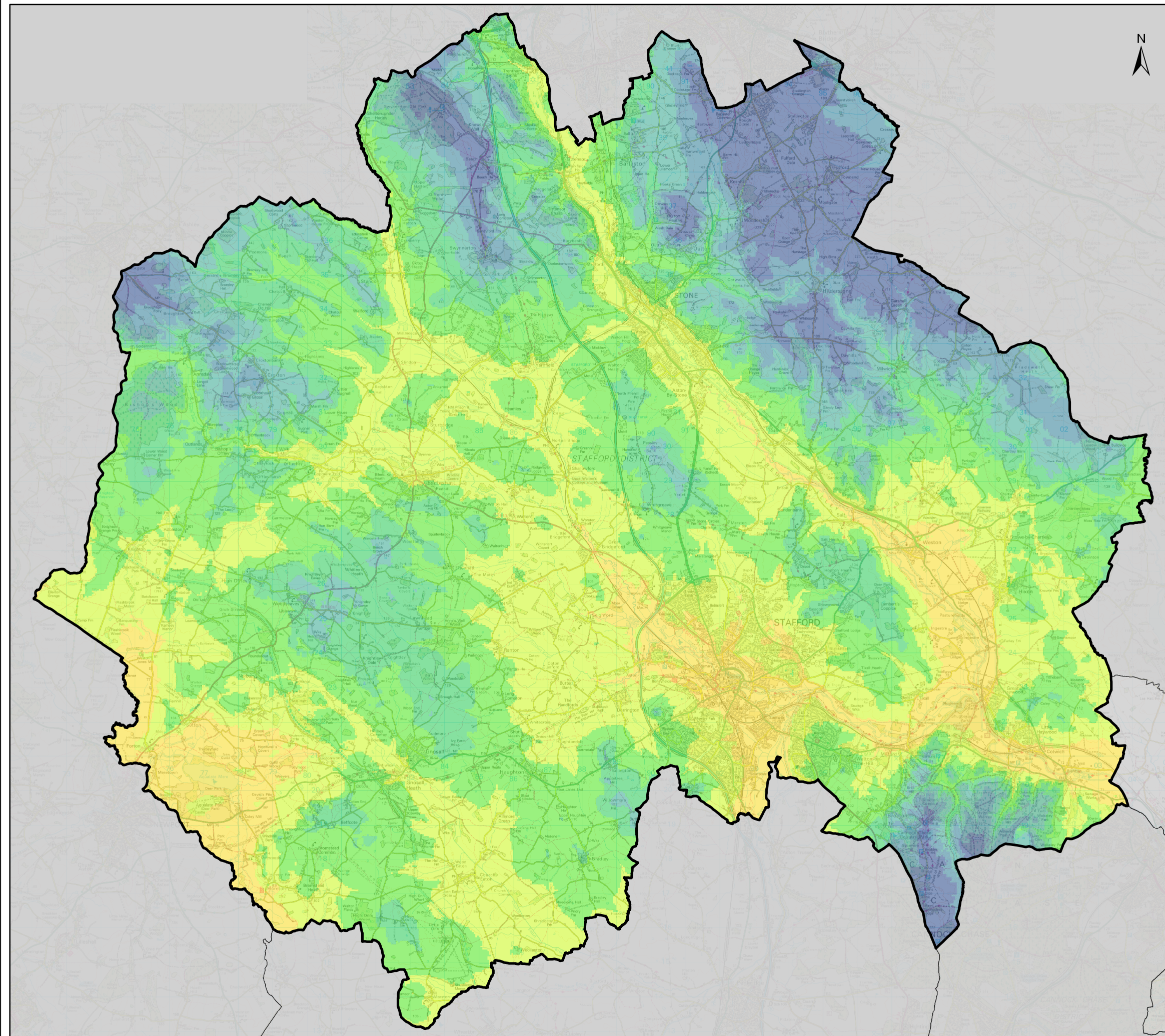
South Staffordshire Strategic Flood Risk Assessment

Figure DG-SB
Drift Geology of
Stafford Borough Council

Consultants

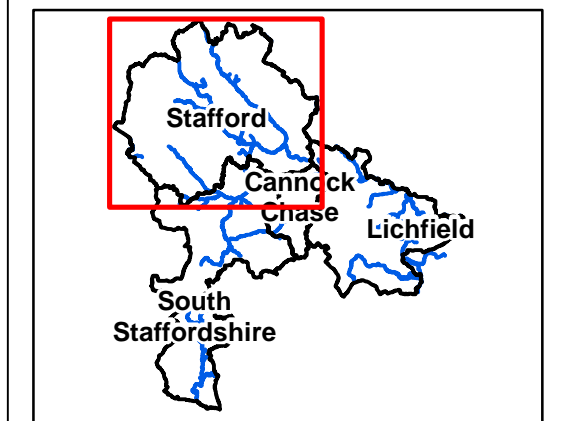
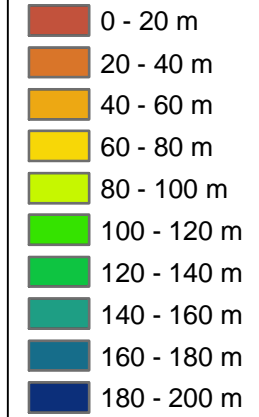
CAPITA

DRAWN BY HT	CHECKED BY JT	PASSED BY JT	DATE 14/04/14	SCALE @ A3 1:110,000
DRAWING NUMBER CS069598_DG_004			REV 2	ISSUING OFFICE Bristol



Legend

Topography



Notes

Contains Ordnance Survey data © Crown copyright and database rights 2014
Ordnance Survey 100018205.
Note the property of this drawing and design is vested in Capita Property and
Infrastructure Limited and must not be copied or reproduced in anyway without
their written consent.



South Staffordshire Strategic Flood Risk Assessment

Figure T-SB
Topography of Stafford
Borough Council

Consultants

CAPITA

DRAWN BY HT	CHECKED BY JT	PASSED BY JT	DATE 17/04/14	SCALE @ A3 1:110,000
DRAWING NUMBER CS069598_T_004			REV 2	ISSUING OFFICE Bristol